



# MONTHLY MEMBERSHIP PROGRESS REPORT

Results as of: 6/30/2015

Multiple District 35

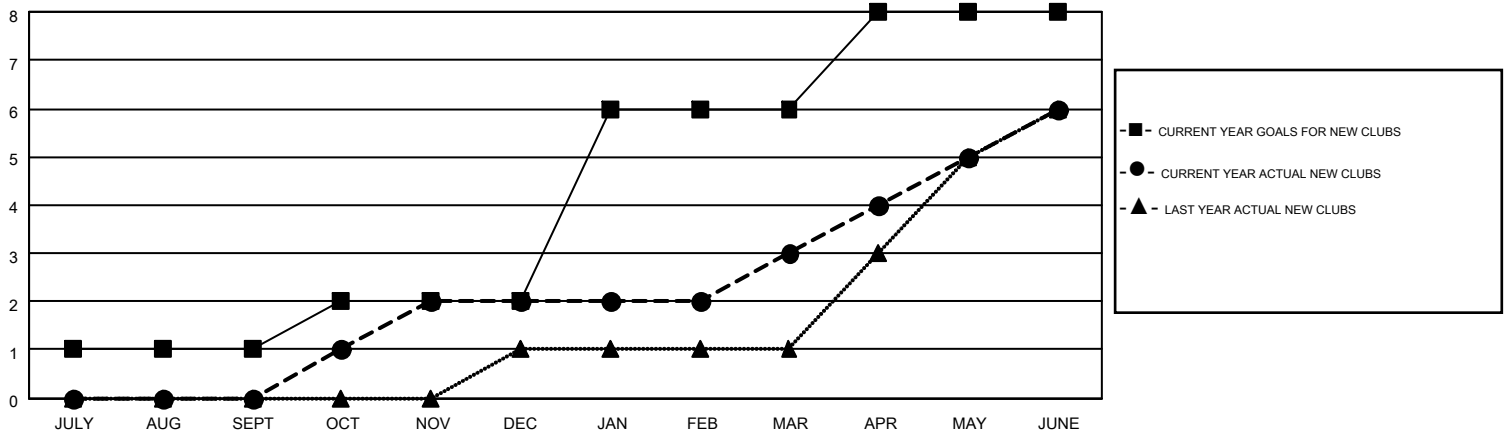
LOCATION: FLORIDA

GMT: CARL HARRELL

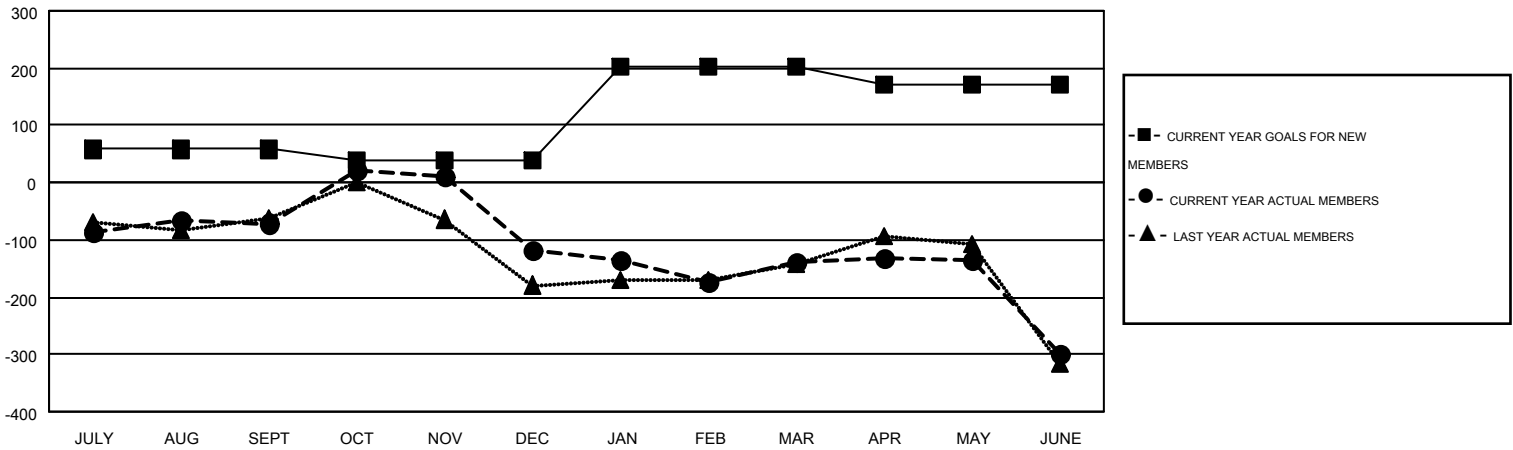
GMT CA 1

Clubs					Members				
RESULTS FOR 2014-2015					RESULTS FOR 2014-2015				
QUARTER	NEW CLUB GOAL	NEW CLUBS	DROPPED CLUBS	NET GAIN/LOSS	QUARTER	NEW MEMBER GOAL	CHARTER AND NEW MEMBERS ADDED	DROPPED MEMBERS	NET GAIN/LOSS
JULY/AUG/SEPT	1	0	3	-3	JULY/AUG/SEPT	58	193	264	-71
OCT/NOV/DEC	1	2	2	0	OCT/NOV/DEC	-20	287	334	-47
JAN/FEB/MAR	4	1	2	-1	JAN/FEB/MAR	164	215	236	-21
APR/MAY/JUNE	2	3	6	-3	APR/MAY/JUNE	-30	234	394	-160

GOALS AND ACTUAL NEW CLUBS CUMULATIVE



GOALS AND ACTUAL MEMBERS CUMULATIVE



DROPPED CLUBS: 13	186 CLUBS OF 251 ADDED 1 OR MORE NEW MEMBERS	<b>GENDER DISTRIBUTION</b>
		MALE 3,318 (58.59%)
		FEMALE 2,345 (41.41%)
<b>DROPPED MEMBERS</b>	<a href="#">CLICK HERE FOR HEALTH ASSESSMENT DATA</a>	<b>FAMILY UNIT MEMBERS</b> 1,379
DECEASED 98		HEAD OF HOUSEHOLD 665
CLUB CANCELLED 54		NON-HEAD OF HOUSEHOLD 714
OTHER 1,076		
<b>TOTAL 1,228</b>		